

1131 C. R. Hoffmann  
Southampton.

S.S. LAPLAND. 18,565 Tons.



HOME life and home scenes often are closely approximated on the *Lapland*, which is known to many travelers as an ideal family ship. The lounge, with an evening group like this, takes on the aspect of a home living-room. Children are happy here, while their elders share their happiness.

*Lounge has Home-like Atmosphere*

ORIGINAL  
PB# 2455-C

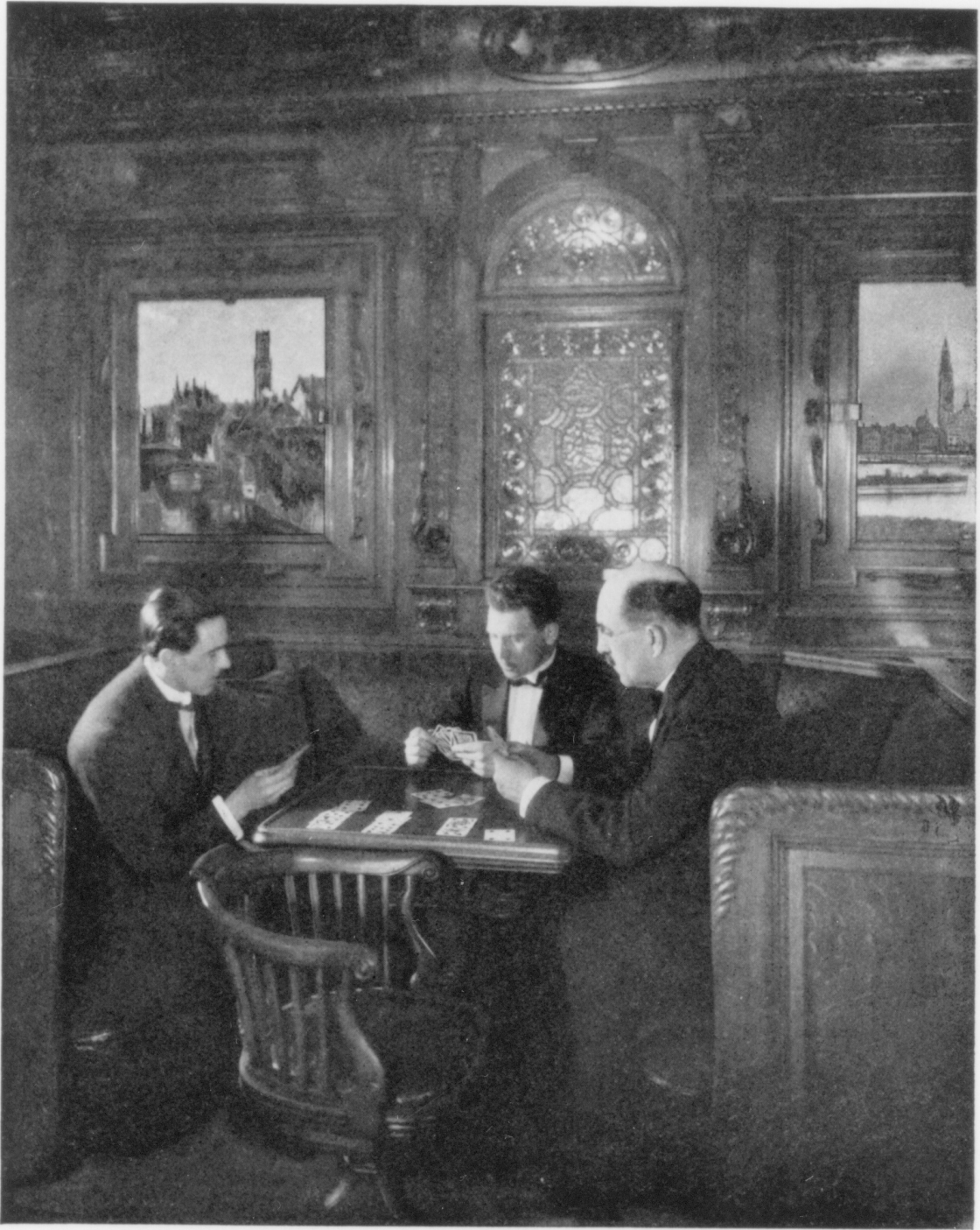
#1



**B**REAKFAST in bed! What woman does not consider it a delightful luxury? On Red Star Line ships it is possible every morning of a voyage. Everything is dainty on the breakfast tray. As cheerful as the morning sunshine is the service that helps make the meal a delight—and there is no extra charge.

*Breakfast in Bed and Dainty Service*

ORIGINAL (#?)  
PB# 2435-D



FINISHED in light oak, with stained glass windows, between panels of richly colored Flemish tiling presenting scenes in Belgium and America, and with deep leather-cushioned bays just large enough for cards, the smoking room on the *Lapland* is one of the most comfortable and attractive on the Atlantic.

*Smoking Room of Distinctive Character*

ORIGINAL (#3)  
PP# 2455-E

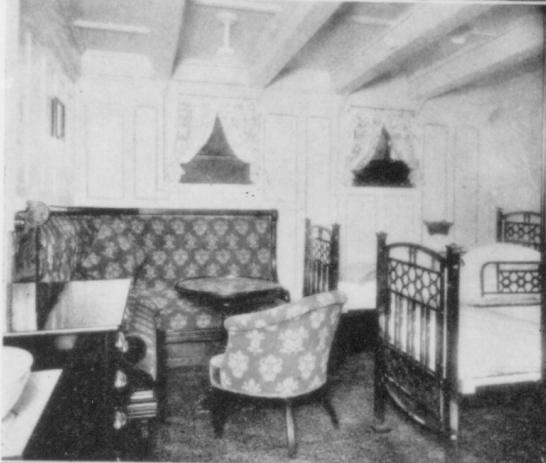
Sitting Room  
in one of the  
Parlor suites



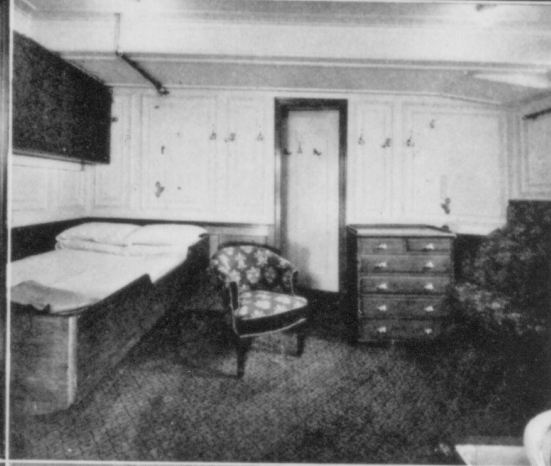
Combined  
Bedroom-  
Sitting Room



Stateroom  
with twin  
Brass Beds



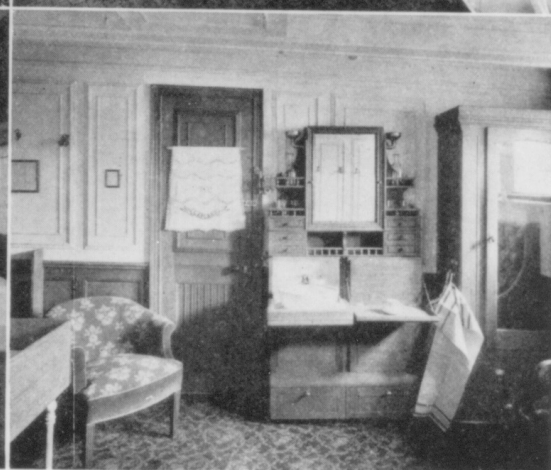
Bedroom in  
one of the  
Parlor Suites



Room with  
Double Bed,  
Parlor Suite



Convenient  
Bedroom  
Equipment



VISUAL evidence of the homelike character of private rooms on the *Lapland* is to be had in these pictures taken in her staterooms and suites. Panelings of oak or maple, beds of the same woods, to match, or wrought in metal, and furniture of substantial pattern, yielding solid comfort, characterize these apartments.

*Features of First-class Rooms*

ORIGINAL  
PB# 2455-F

(#4)